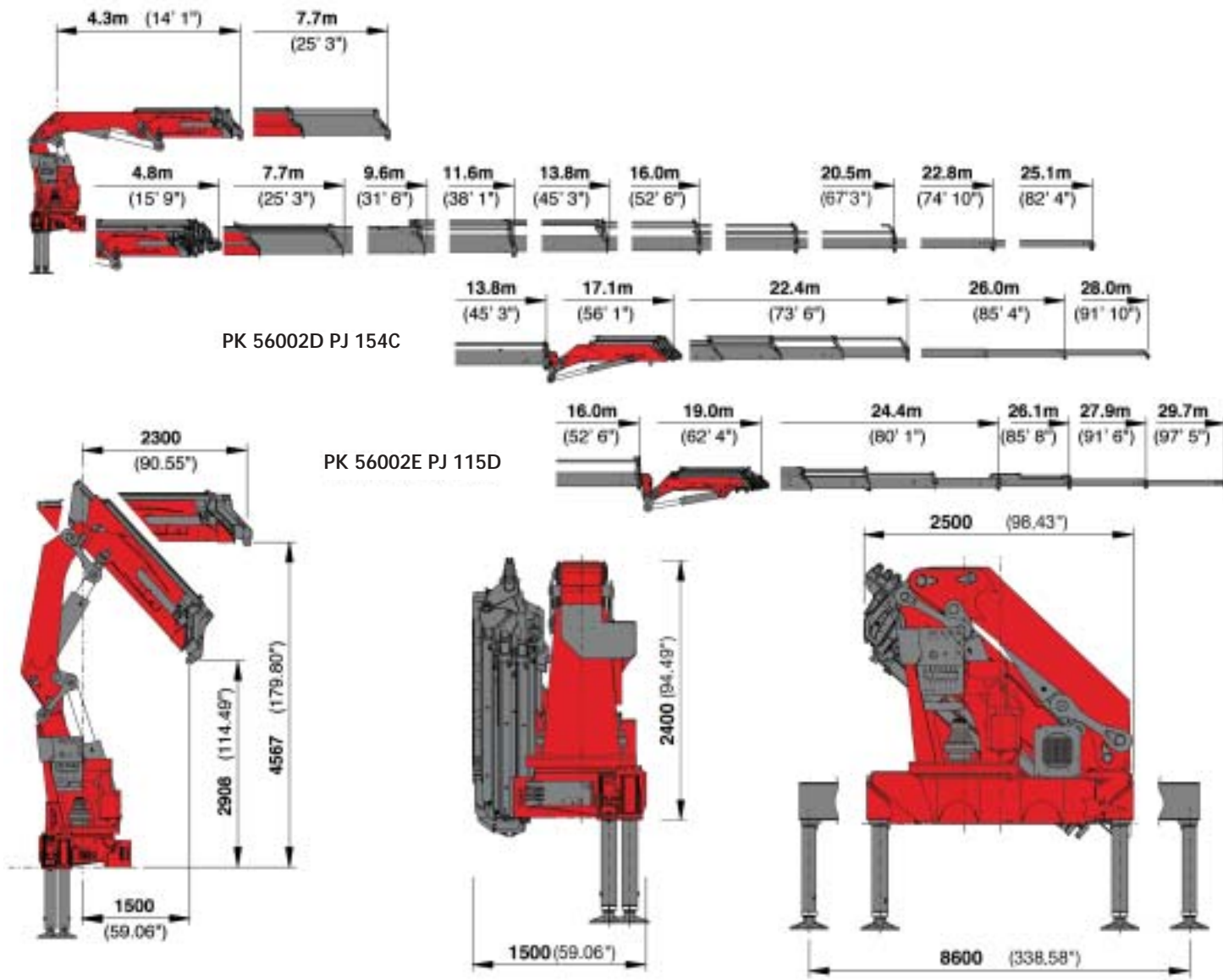


EXCLUSIVELY FROM PALFINGER: AOS –
THE ACTIVE OSCILLATION SUPPRESSION SYSTEM

PK 56002

Performance



PK 56002 Performance	
Technical Specifications (DIN 15018 H1-B3)	
Max. lifting moment	529,7 kNm 54,0 mt 390540 ft.lbs
Max. lifting capacity	19000 kg 186,4 kN 41890 lbs
Max. hydraulic outreach	20,5 m 67' 3"
Max. outreach (with fly jib)	29,7 m 97' 5"
Slewing angle	endless
Slewing torque	
one slewing gear	44,1 kNm 4,5 mt 32510 ft.lbs
one slewing gear	8,7 kNm 7,0 mt 50650 ft.lbs

PK 56002 Performance	
Standard crane	
Stabilizer spread standard	8,6 m 28' 3"
Fitting space required	min. 1,50 m 4' 11" max. 1,65 m 5' 5"
Width folded	2,5 m 8' 3"
Operating pressure	330 bar 4785 psi
Recommended pump capacity	from 80 l/min 17,6 imp.gal./min 21,1 US gal./min to 100 l/min 22,0 imp.gal./min 26,4 US gal./min
Dead weight standard crane	4890 kg 10780 lbs

Executions shown in the leaflet are not always corresponding to standard execution. Design and specification are subject to change without prior notice. Country-specific regulations are to be considered for the crane installation.



THE OPTIMAL COMBINATION OF POWER AND INTELLIGENCE





Control valve

In combination with the PALFINGER radio control system the load sensing proportional valve enables extremely smooth and precise operation.

Additional hinged arms

To extend the range of applications of the PK 56002 *Performance* additional hinged arms are available in several designs and for various arm versions.



Hose equipment for accessories

With this option you can provide the oil supply to accessories. The hoses are routed in compact trays and plastic link chains. They are therefore optimally protected.

Internally routed oil ducts

The internally routed oil ducts permit a compact design for the extension system and ensure perfect protection from damage.

Return oil utilisation

The high speed of the extension system is impressive. It results from return oil utilisation, which is installed as standard, and the generously dimensioned hydraulic lines. This makes for increased efficiency in any type of work.

Endless slewing mechanism

The standard endless slewing mechanism provides an unrestricted work radius. As a result the crane operates much more quickly and cost-efficiently.



Functional Design

- Cover in the area of the control valve
- Hoses covered behind the crane column
- Support system with internally routed hydraulic hoses

Load-holding valves

They prevent the crane arm from dropping and are fitted as standard onto the slewing mechanism, elevating arm, and extension cylinders. The valves are positioned in such a way that they are protected from being damaged.



AOS

The Active Oscillation Suppression system, which is available exclusively from PALFINGER, compensates for jolts and sharp stress cycles caused by crane operation. Because oscillations are eradicated, the crane can work with pin-point accuracy, much more quickly and therefore more cost-efficiently.

Outrigger system

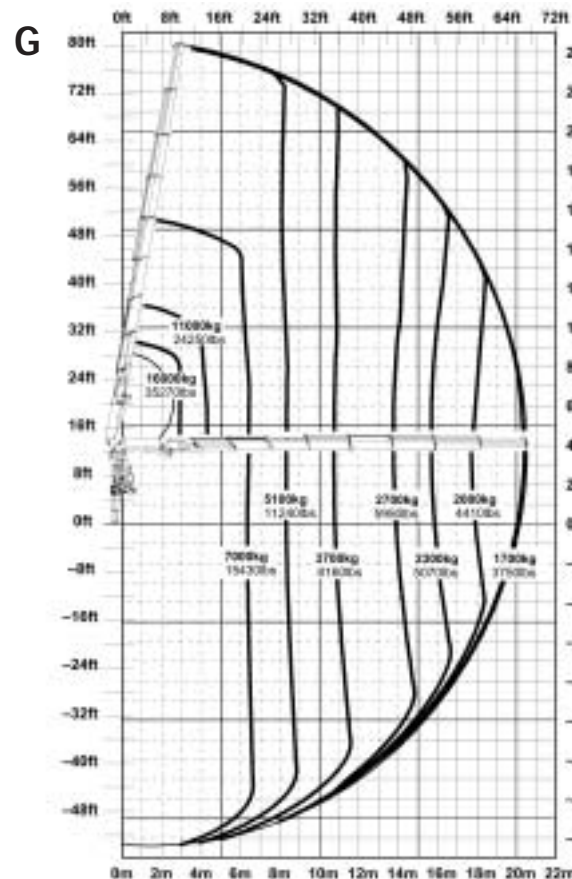
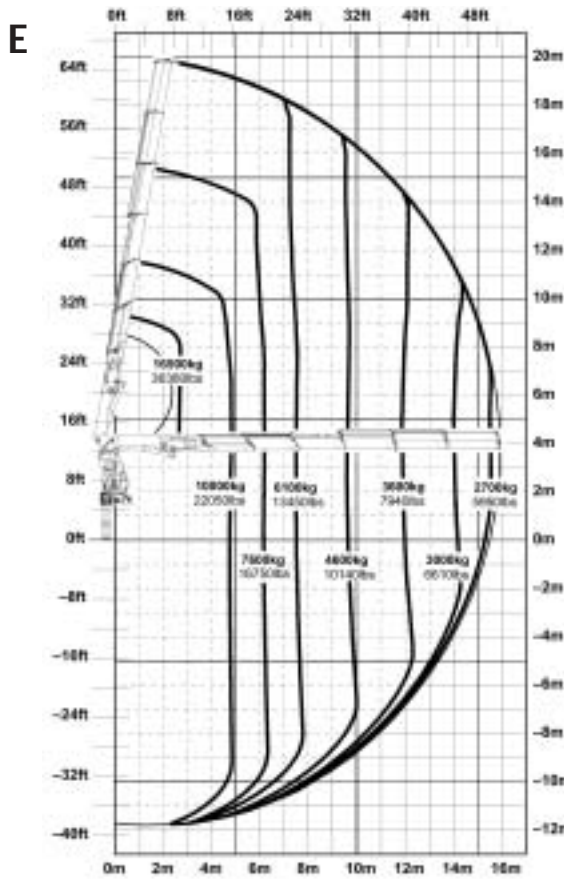
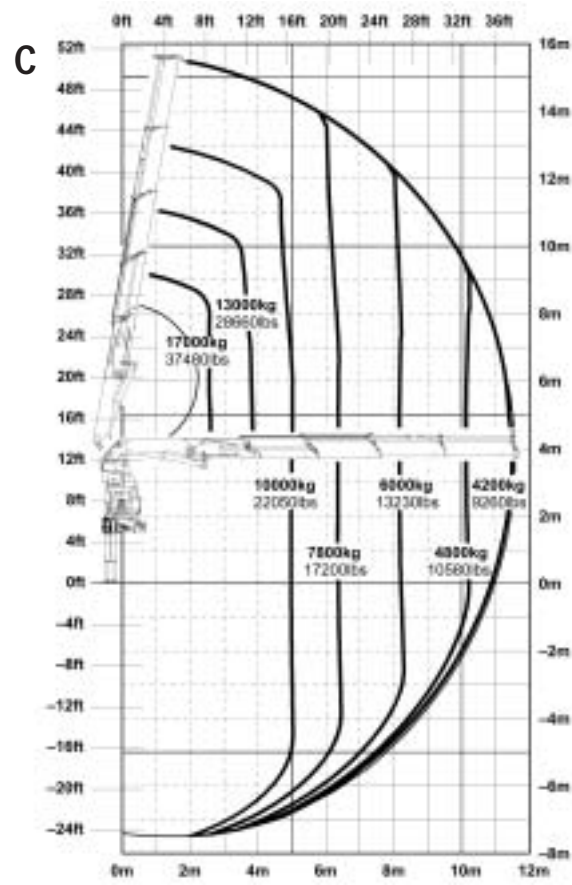
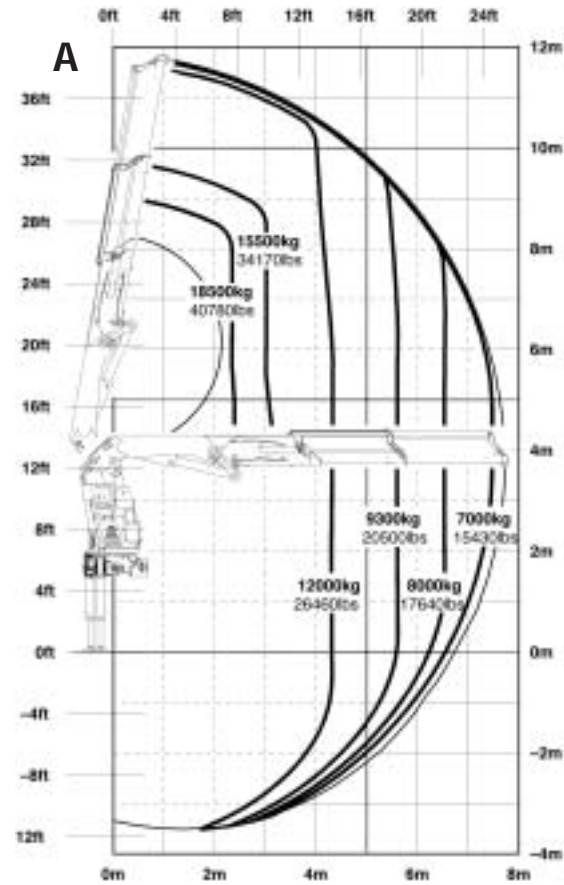
The 8.6 m outrigger system fitted as standard ensures optimal stability – as an option it can be supplied with support cylinders that can be hydraulically swivelled up 180°. The control valves for crane and additional support are mounted as standard on the base frame. The switchover between crane and support control takes place electrically. Spirit level and hour counter are mounted as standard in the support control valve console.



Advanced Package

- Oil cooler mounted
- Electronic HPLS
- Capacity display on control console
- PALFINGER radio control
- PALTRONIC 50
- Functional Design

PK 56002 Performance



Max. lifting capacities

PK 56002 Performance A		
hydraulic		
max. Capacity: 18740 kg/41310 lbs		
Outreach	Capacity	
4,4 m 14' 5"	11810 kg	26040 lbs
5,8 m 19' 0"	8990 kg	19820 lbs
7,5 m 24' 7"	6960 kg	15340 lbs

PK 56002 Performance D		
hydraulic		
max. Capacity: 17420 kg/38400 lbs		
Outreach	Capacity	
4,4 m 14' 5"	11240 kg	24780 lbs
5,8 m 19' 0"	8370 kg	18450 lbs
7,5 m 24' 7"	6320 kg	13930 lbs
9,4 m 30' 10"	4920 kg	10850 lbs
11,4 m 37' 5"	3990 kg	8800 lbs
13,7 m 44' 11"	3310 kg	7300 lbs
manual		
15,9 m 52' 2"	2700 kg	5950 lbs
18,1 m 59' 5"	2240 kg	4940 lbs

PK 56002 Performance G		
hydraulic		
max. Capacity: 15730 kg/34680 lbs		
Outreach	Capacity	
4,4 m 14' 5"	10760 kg	23720 lbs
5,8 m 19' 0"	7910 kg	17440 lbs
7,5 m 24' 7"	5810 kg	12810 lbs
9,4 m 30' 10"	4380 kg	9660 lbs
11,4 m 37' 5"	3430 kg	7560 lbs
13,7 m 44' 11"	2710 kg	5970 lbs
15,8 m 52' 2"	2280 kg	5030 lbs
18,1 m 59' 5"	1950 kg	4300 lbs
20,4 m 66' 11"	1720 kg	3790 lbs
manual		
22,7 m 74' 6"	1460 kg	3220 lbs
25,0 m 82' 0"	1270 kg	2800 lbs

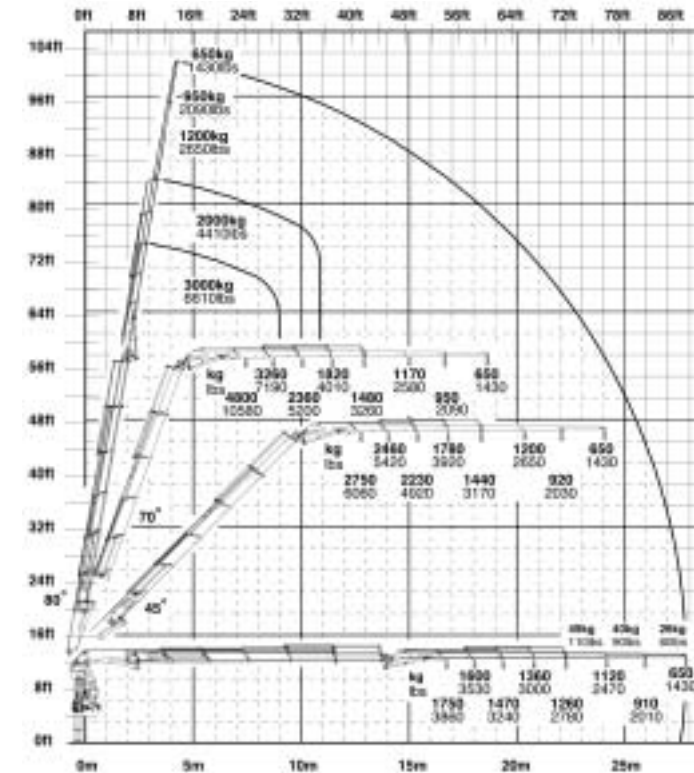
PK 56002 Performance B		
hydraulic		
max. Capacity: 18550 kg/40890 lbs		
Outreach	Capacity	
4,4 m 14' 5"	11610 kg	25600 lbs
5,8 m 19' 0"	8790 kg	19380 lbs
7,5 m 24' 7"	6770 kg	14930 lbs
9,4 m 30' 10"	5400 kg	11900 lbs

PK 56002 Performance C		
hydraulic		
max. Capacity: 18290 kg/40320 lbs		
Outreach	Capacity	
4,4 m 14' 5"	11430 kg	25200 lbs
5,8 m 19' 0"	8580 kg	18920 lbs
7,5 m 24' 7"	6550 kg	14440 lbs
9,4 m 30' 10"	5170 kg	11400 lbs
11,4 m 37' 5"	4250 kg	9370 lbs
manual		
13,7 m 44' 11"	3390 kg	7470 lbs
15,9 m 52' 2"	2770 kg	6110 lbs

PK 56002 Performance E		
hydraulic		
max. Capacity: 17070 kg/37630 lbs		
Outreach	Capacity	
4,4 m 14' 5"	11050 kg	24360 lbs
5,8 m 19' 0"	8170 kg	18010 lbs
7,5 m 24' 7"	6110 kg	13470 lbs
9,4 m 30' 10"	4710 kg	10380 lbs
11,4 m 37' 5"	3770 kg	8310 lbs
13,7 m 44' 11"	3080 kg	6790 lbs
15,8 m 52' 2"	2650 kg	5840 lbs
manual		
18,1 m 59' 5"	2190 kg	4830 lbs
20,4 m 66' 11"	1820 kg	4010 lbs

The reaches are indicated for a 20° main boom position and are therefore not the maximum ones.

PK 56002D PJ154C



PK 56002E PJ115D

